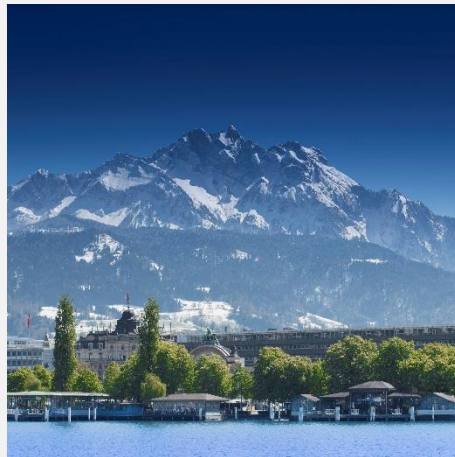
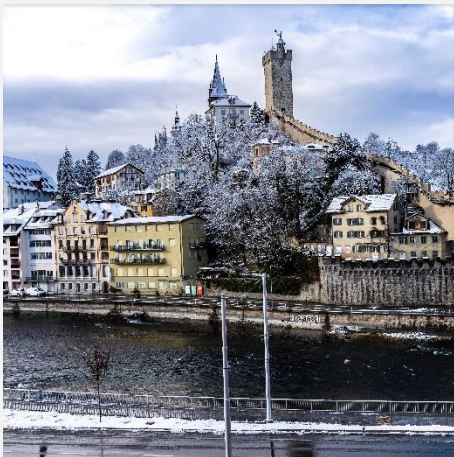


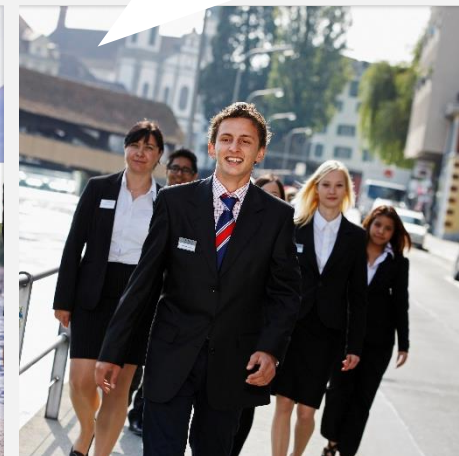
TRIP TO B.H.M.S. 30.01.2022. – 02.02.2022.

B.H.M.S.
Business & Hotel Management School

B.H.M.S. | Business & Hotel Management School , SWITZERLAND, LUCERNE



30.01.2022. –
02.02.2022.



Dear Students and Graduates,

TRIP TO B.H.M.S., SWITZERLAND JANUARY 30, 2022 – FEBRUARY 02, 2022

ALL OUR PROGRAMMES' STUDENTS AND GRADUATES ARE INVITED!

Our great partner **B.H.M.S. Business and Hotel Management School, Lucerne, Switzerland**, kindly invited HOTEL SCHOOL Hotel Management College students to attend the lectures, receive the certificate, get acquainted with the facilities and visit the sites around in Switzerland. After this trip it is possible to get a recommendation letter and an additional discount for further studies at top-up degree, continuation of the studies after graduation from HOTEL SCHOOL Hotel Management College.

Our partners kindly arrange meal and accommodation for the guest students, what you need to arrange yourself – to buy the flight tickets.

Time: departure Sunday January 30, 2022, flight Airbaltic Riga – Zurich, arrival February 02, 2022 flight Airbaltic Zurich-Riga. Then we will get from Zurich to Lucerne City.

Hurry up, the flight tickets may get expensive, and the number of the places is strictly limited for this trip. We recommend to take the tickets with flexible dates as Covid-19 restrictions may change the situations.

Primary Contact: Development Director, Olga Zvereva, olga@hotelschool.lv who will guide You during the trip or Academic Department info@hotelschool.lv

Switzerland Entry Requirements

Because of the common travel area of the Schengen Zone, the member states of which have abolished borders for their citizens, if you are an EU/EEA national, you will only need an identification document to enter Switzerland.

Whereas, if you are a non-EU/EEA traveller wishing to visit Switzerland, you will need to present the following, when you show up at the Swiss port of entry:

A passport or travel document. **Valid for at least three more months beyond your planned date of exit from Schengen,** and issued within the last 10 years.

A visa – if you are subject to the Swiss visa regime.

Do you need a visa?

Please check your nationality here <https://www.swiss-visa.ch/ivis2/#/i210-select-country> and here https://www.sem.admin.ch/sem/en/home/publiservice/weisungen-kreisschreiben/visa/liste1_staatsangehoerigkeit/1.html

YOUR ACTIONS:

1. Check your Switzerland Entry (visa) requirements, your passport validity.
2. Check your Coronavirus Entry Restrictions / requirements, your Covid 19 valid certificate.
3. Please inform that you are going latest by 10.01.2022, better immediately to the email olga@hotelschool.lv, info@hotelschool.lv . For a quick question / answer (up to 1 day), please contact Olga Zvereva olga@hotelschool.lv
4. Book your tickets at Airbaltic and send info on your purchased tickets. departure Sunday January 30, 2022, flight Airbaltic Riga – Zurich time 12-40 p.m. today's price 73 EUR as fixed ticket, arrival February 02, 2022 flight Airbaltic Zurich-Riga time 14-40 p.m., today's price 87 EUR for fixed ticket, at www.airbaltic.com. The total fixed ticket cost is 160 EUR on 29.12.2021. For flexible tickets you will have to add about 58 EUR to and from, total. The prices may change, and can reach much higher amounts, so please book immediately. Send the information on the tickets to olga@hotelschool.lv, info@hotelschool.lv
6. You will have to buy the travel insurance for that period <https://www.compensa.lv/> , travel insurance (option - for the rest of the world excluding USA, Japan, Australia) <https://veikals.compensa.lv/lv/travel> - Gold Programme will cost 12 EUR, platinum (recommended) programme will cost 24 EUR . It is possible to buy shortly before the flight. After purchase, you will have to submit the valid insurance before the trip. Send the copy to olga@hotelschool.lv

Wait for further information on the arrangements.

UNEXPECTED ISSUES:

You should have available funds for any unexpected issue – flight change, delay, weather conditions, additional tests, etc.

This is the trip during the unexpected changes that may happen due to Covid or weather conditions, etc.

Therefore, an insurance is requested that you can claim later from.

Also, you will have to participate in the meeting about the trip information and instruction, and sign the paper that you are individually responsible for the travel situation - as adults.

The situation may change like all around, but we still plan the visit and have purchased the tickets at our side for self.

Information on Coronavirus requirement:

On the way to Switzerland: <https://www.sem.admin.ch/sem/en/home/sem/aktuell/faq-einreiseverweigerung.html#1668147653>

On return to Latvia: <https://covid19.gov.lv/en/support-society/careful-travel/overview-entry-restrictions-and-security-measures>

And www.covidpass.lv

The current situation shows, that with EU passport and COVID 19 certificate valid for the EU, there is a need to show the negative test (Pandemic-related measures)

You need to present a negative PCR test (not older than 72 hours) or a negative rapid antigen test (not older than 24 h) at boarding and upon entry. Under 16s and people who have a medical certificate to prove that they cannot have a Sars-CoV-2 test for medical reasons are exempt from the testing requirement.

You need to fill in an entry form before you cross the border. (entry form).

and to fill in the form before the entry <https://swissplf.admin.ch/formular>

OUR GREAT PARTNER B.H.M.S. OFFERS TO THEIR STUDENTS AND ACCEPTS HOTEL SCHOOL Hotel Management College STUDENTS to the TOP-UP DEGREE studies:

- **ASSURED INTERNSHIPS IN SWITZERLAND OR ABROAD**
- **JOB PLACEMENT SUPPORT UPON GRADUATION**
- **DOWNTOWN CAMPUS IN THE BEAUTIFUL CITY OF LUCERNE**

You will get more information during the visit!

DON'T MISS THAT KIND INVITATION FROM B.H.M.S.,

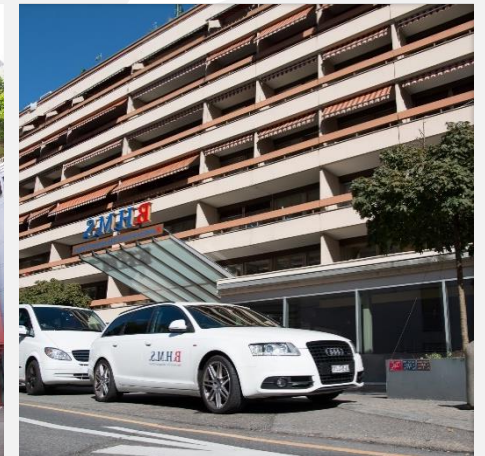
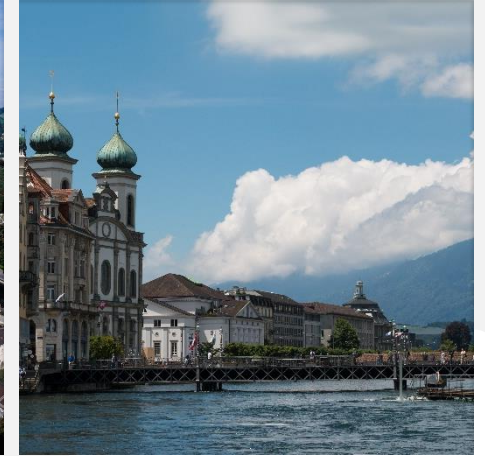
And enjoy the beauty of the winter in Switzerland and nice time with your groupmates!

Several of our previous year students already have visited the BHMS with us, and continue their studies at BHMS!

TRIP TO B.H.M.S. 30.01.2022. – 02.02.2022.

B.H.M.S. | Business & Hotel Management School , SWITZERLAND, LUCERNE

B.H.M.S.⁺
Business & Hotel Management School

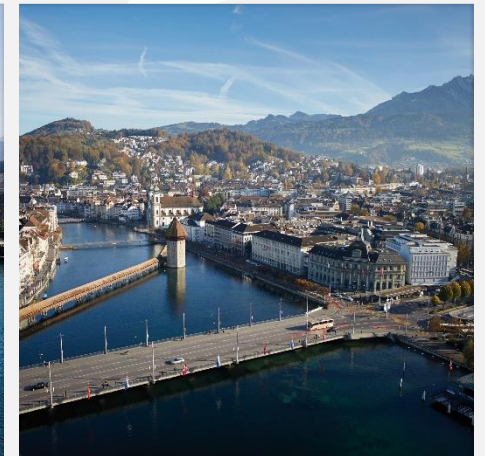
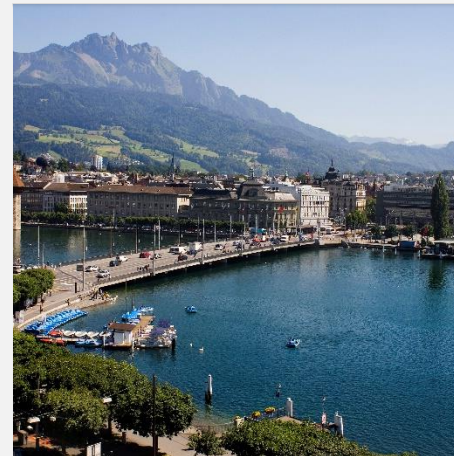
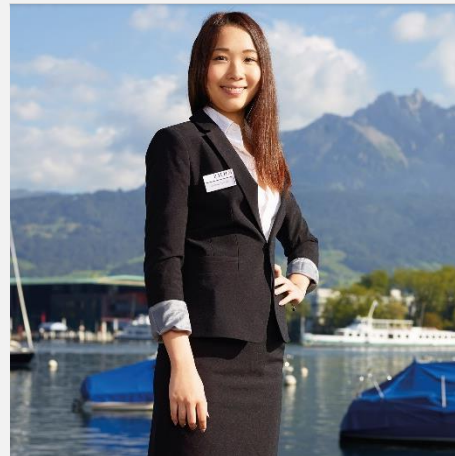
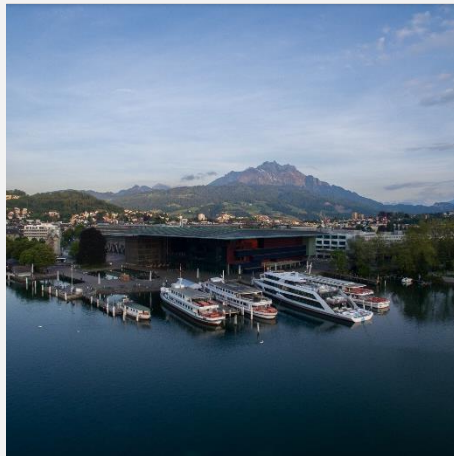


HOTEL SCHOOL
★★★★★
HOTEL MANAGEMENT COLLEGE

TRIP TO B.H.M.S. 30.01.2022. – 02.02.2022.

B.H.M.S. | Business & Hotel Management School , SWITZERLAND, LUCERNE

B.H.M.S.⁺
Business & Hotel Management School



HOTEL SCHOOL
★★★★★
HOTEL MANAGEMENT COLLEGE

TRIP TO B.H.M.S. 30.01.2022. – 02.02.2022.

B.H.M.S. | Business & Hotel Management School , SWITZERLAND, LUCERNE

Time: departure Sunday January 30, 2022, flight Airbaltic Riga – Zurich, arrival February 02, 2022 flight Airbaltic Zurich - Riga.
Then we will get from Zurich to Lucerne City.

WELCOME



TRIP TO B.H.M.S. 30.01.2022. – 02.02.2022.
B.H.M.S. | Business & Hotel Management School, SWITZERLAND

B.H.M.S.⁺
Business & Hotel Management School

HOTEL SCHOOL
★★★★★
HOTEL MANAGEMENT COLLEGE

TRIP TO B.H.M.S. 30.01.2022. – 02.02.2022.

B.H.M.S. | Business & Hotel Management School , SWITZERLAND, LUCERNE

Primary Contact for the TRIP:

Development Director, Olga Zvereva, olga@hotelschool.lv

who will guide You together with Konstantins Spakovs during the trip .

Also you can contact our Academic Department info@hotelschool.lv